

# Kajiado Mobile Digital Learning

## CONCEPT PAPER



Project Overview	
Project Name	Kajiado Mobile Digital Learning
Project Location	Kajiado, Kajiado County, Kenya
Geo Reference	See Annexes
National Office	Kenya
Project Partners	wiLearn 4 Life
Primary Sector	Education
Secondary Sector	Life Skills - Resilience
Start date of project	1.Jan.2024
Duration	24 Months
Planned Completion date	31.Dec.2025
Project Coordination	Kajiado, Kenya
# direct beneficiaries	
# indirect beneficiaries	
Local Contact Person	Samuel Mbogo <a href="mailto:mbogosam@gmail.com">mbogosam@gmail.com</a>
Proposed Total Budget	24,200 USD
Date of submission	21 Nov 2023
Contact Person wiLearn	Roland Diethelm
Tel, Skype, Email	+41762150963 , roland@wilearn.org

## SUMMARY

The Kajiado Mobile Digital Learning project is designed to address the educational challenges faced by resource-constrained schools in Kajiado East Sub-County, Kajiado County, Kenya. The project's primary goal is to provide high-quality educational resources in multimedia format to schools, particularly focusing on those with limited resources. Initially, the project aims to impact **five schools**, catering to more than **1500 learners** within a 15-kilometer radius of our operational base.

To facilitate the delivery of educational libraries, we plan to utilize two motorcycles to transport the Mobile Learning Lab Interactive (moLLi) cases to the selected schools on a weekly basis. These solar powered cases, containing essential education technology, will be stationed in library buildings, identified as optimal locations for learners to access educational content digitally. In schools that lack a library room, the mobile system is placed in another central location allowing learners to access the content even from various classrooms. This approach enables teachers to incorporate the digital media resources into their classrooms using projectors without the need for relocating the WiFi library. To ensure seamless connectivity, WiFi extenders will be strategically deployed as needed.

The success of the project relies on regular accessibility, inherent curiosity of children and the comprehensive training provided to both teachers and learners. Training sessions will cover navigating the content stored on the WiLearn Server, utilizing tablets to access learning resources, and incorporating multimedia content into the teaching process. Additionally, school administrators will be encouraged to allocate dedicated time for learners to leverage these resources effectively.

The tools will serve two primary functions:

**a. Digital Library Access:** The WiLearn Server will be centrally located, preferably in a library, allowing anyone in the school to access the content. Our team will be available to assist individuals in locating and utilizing the information they need.

**b. Teacher-Led Instruction:** Teachers interested in integrating the digital content into their lessons will have access to Wi-Fi and will be provided with projectors for instructional purposes.

## SCOPE

The project anticipates that exposure to digital technologies will enhance learners' digital competence skills, including searching, evaluating, organizing, note-taking, and other tasks using tablets, the WiLearn server, and projectors. Importantly, the engaging and exciting multimedia content is expected to improve academic performance and school attendance, fostering a positive outlook on learning sessions.

This initiative aims to empower learners with digital skills, contributing to bridging the digital divide, particularly in schools with limited resources. Furthermore, the project seeks to address the inadequacy of teaching and learning resources, particularly in private schools. To effectively implement this initiative, the project aims to acquire a minimum of **four (4) moLLi cases**, with the project coordinator generously providing two motorcycles to support this cause.

## RELEVANCE

- **Project Background**

Kajiado County is generally considered to be a hardship area. It is habited mainly by Maasai community who practices nomadic life. Most part of Kajiado is marginalized and has been neglected by the government for a long time. The area lacks basic amenities and the infrastructure, especially the roads to the interior are very bad.

The proximity to Nairobi County has seen an upsurge in population from many people who are buying land and settling there. The available schools are majorly private and poorly equipped. These schools are in dire need of teaching and learning resources. Digital divide is even worse. Therefore, the wiLearn digital tools offers a great opportunity as they are very ideal in supporting teaching and learning. Hence, two moLLi cases (Mobile Learning Lab Interactive) will be very ideal and helpful especially when moved around using a motorcycle in order to reach as many schools as possible.

- **Goal and Target Beneficiaries**

The goal of this project is to offer quality digital educational resources in form of multimedia to close to 1500 learners in marginalized areas of Kajiado County in Kenya. It is targeting to begin with 5 schools scattered within Kajiado County. These schools include:

- a) Nile Basin School (Location: <https://goo.gl/maps/U62taQzU33GgpBqP6>)
- b) Oloosirkon Primary School (Location: <https://goo.gl/maps/6utRBD5mevcDxX687>)
- c) Excellence Promise Academy (Location: 2 kilometres away from Nile Basin)
- d) Jeskids Junior Academy (Location: Tuala town, near Oloosirkon Primary School)
- e) Emakoko, Tuala.

## COHERENCE

- **National Education Sector Strategic Plan**

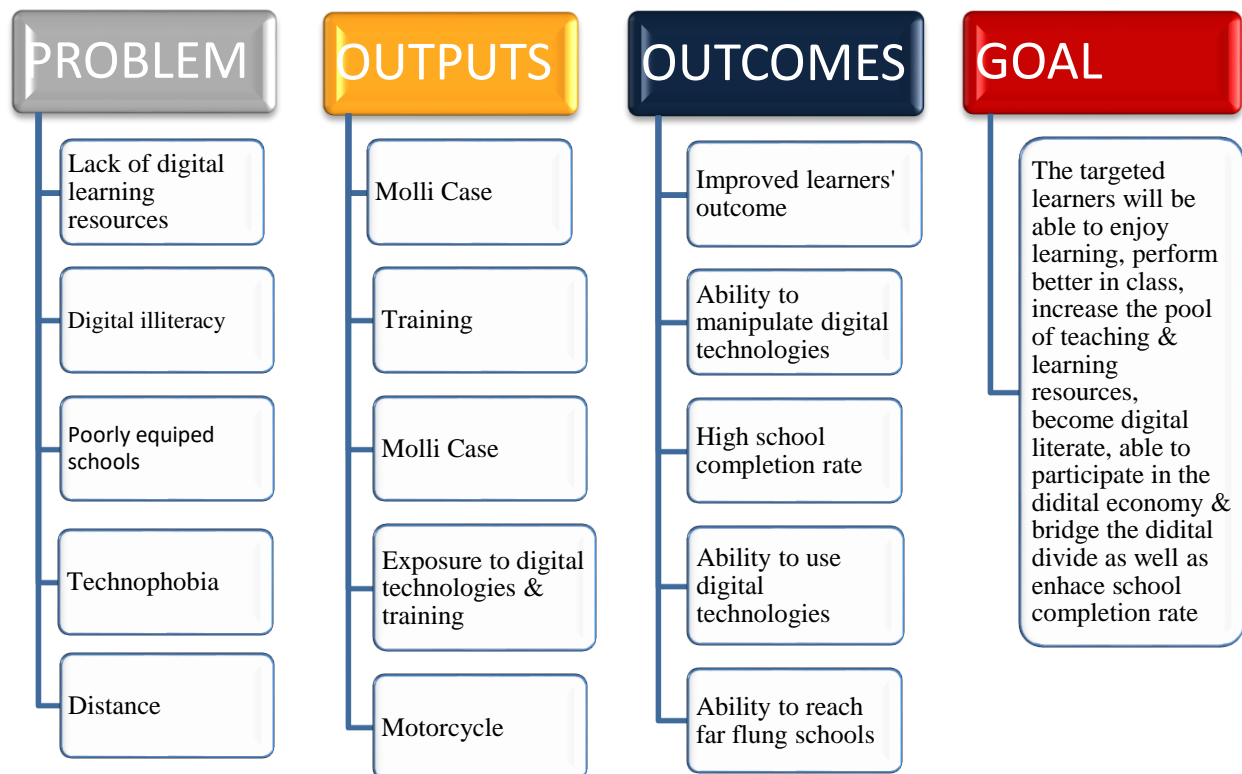
The goal of this project is to provide quality digital learning content to the marginalized communities in Kenya. It therefore aligns very well with the Kenya’s National Education Sector Strategic Plan (2018 - 2022) which aims to provide, promote and coordinate competency based equitable learner centred education and training for sustainable development. Digital literacy competency is an integral part of the new Competency Based Curriculum (CBC).

- **SDG4**

This project aims to avail quality education to the marginalized communities. We are striving to bridge the digital divide with the help of WiLearn for Life.

## EFFECTIVENESS

- **Theory of Change**



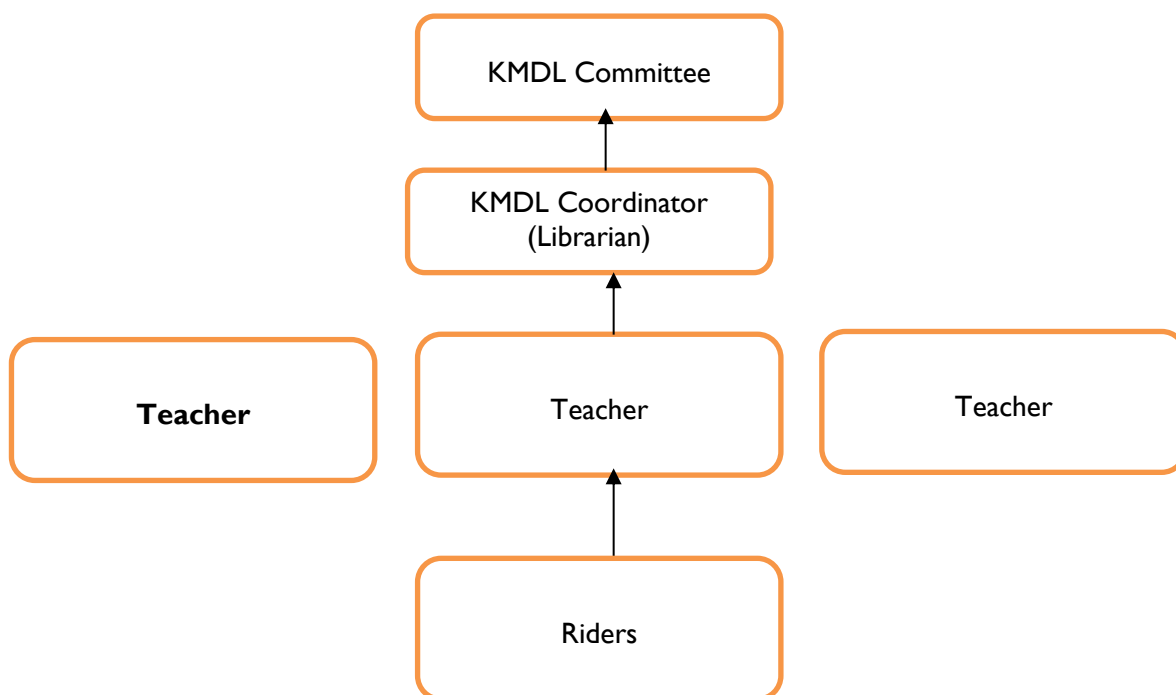
- **Stakeholder, Experts, and Partner Overview**

The project has put in place an advisory committee to oversee the implementation of the activities of the Kajiado Mobile Digital Learning. The committee meet once every 2 months to evaluate the activities on the ground and advise accordingly. This project also aims to draw the expertise of the coordinator who is a librarian of a university for more than 2 decades. He has also been coordinating another Wilearn 4 Life-supported project by the name Kuwinda Community Library. There are also two teachers, and a volunteer.

**BOARD MEMBERS**

No	Name	Roles	Phone	Email
1	Samuel Mbogo	Chair	0722 212 912	mbogosam@gmail.com
2	Evelyne Wangui	Treasurer	0720606358	wanguievelyne@gmail.com
3	Stacy Wanjiru	Secretary	0714608945	stacywa10@gmail.com
4	Francis Waweru	Vice Chair	0726439614	wawerufranc20@gmail.com
5	Edward Kinyungu	Strategic development	0713 426501	

- **Organigram, Competencies**



## EFFICIENCY

- **Resourcing & Budget**

The headteachers contacted are mostly the school owners, and had expressed their willingness to subscribe to our services on a term basis. The coordinator will donate two motorcycles to the project, make sure they are fueled, and the bikers paid for their delivery work.

Item	Description	Teacher Unit (USD)	TOTAL (USD)
Mobile Learning Equipment	MoLLi Kit complete, incl library server, wiFi projector, screen, 10 tablets	4,900	19,600
MsingiPack Software	Licensed to Virtual Essence – Grade 1-8	600	2,400
Project Management & Finance	10%		2,200
<b>Total (USD)</b>			<b>24,200</b>

- **Project Schedule**

Events	April 2023	Sept 2023	October 2023	November 2023	December 2023	Jan 2024	Mar 2024	April 2024	May 2025
Reaching out to schools	X	X							
Signing contracts					X				
Delivery of Molli Cases					X				
Training						X			
Commence work						X			
Reviews of work						X			
Improvement of processes							X		
Report									X

(project implementation plan or simple grid with activity timetable)



ANNEXES

Annex 1: Nile Basin School (Location: <https://goo.gl/maps/U62taQzU33GgpBqP6>)









Annex 2: Oloosirkon Primary School (Location: <https://goo.gl/maps/6utRBD5mevcDxX687>)



**Annex 3: Excellence Promise Academy (Location: 2 kilometres away from Nile Basin)**





**Annex 4: Jeskids Junior Academy (Location: Next to Oloosirkon Primary School)**

“Jeskids Junior Academy inside the corrugated sheets did not allow us to take photos. However, they are very receptive and have invited us to grace their graduation ceremony”.

